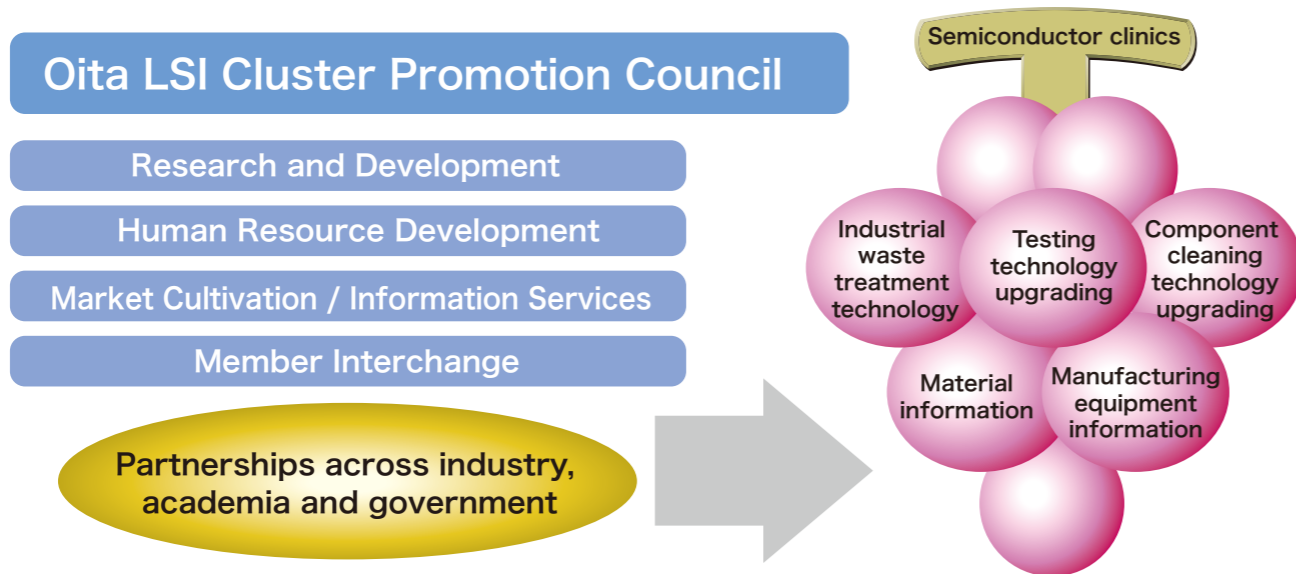


OITA LSI Cluster Concept

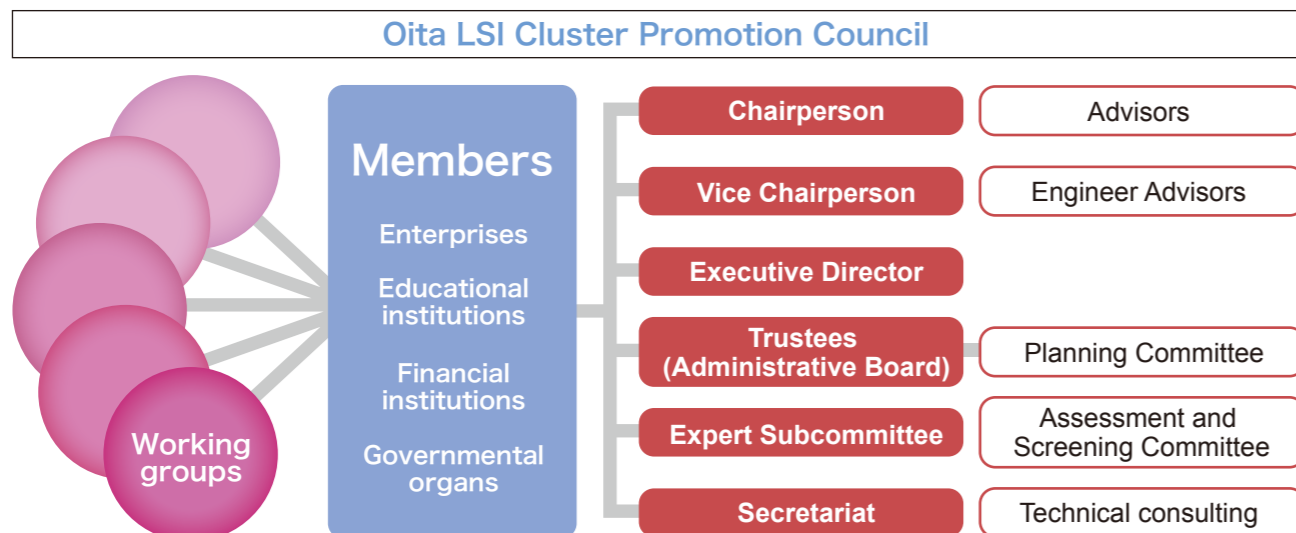
The OITA LSI Cluster concept was formulated with the aim of generating more dynamic industrial activity in Oita Prefecture and achieving community and enterprise development and revitalization through both collaboration and competition. Oita LSI Cluster Promotion Council, established in April 2005, seeks to develop clusters of locally-based enterprises and major firms that have established operations in the prefecture, and utilize their technological strengths to create a 21st-century hub for semiconductor production that is internationally competitive in terms of quality, cost and turnaround time. This task involves the development of networks bringing together partners from industry, academia and government, and strategic initiatives to further integrate our prefecture's advanced manufacturing technologies.

OITA LSI Cluster Concept



The core element of the Oita LSI Cluster concept is engagement with the testing technologies (evaluation processes) essential to the manufacture of semiconductors. We aim to create a "semiconductor clinic" that delivers solutions based on scientific diagnosis and systematic technology development, accumulates and disseminates information and the results of impartial evaluation, and offers counseling as appropriate. To this end, we are implementing a range of specific initiatives around the four functional pillars of Research and Development, Human Resource Development, Market Cultivation / Information Supplement, and Member Interchange.

The acronym "LSI" used in the concept's title stands for the Large Scale Integrated circuits in semiconductors, but also incorporates the idea of Large Scale Integration of semiconductor-related enterprises in Oita prefecture for the purpose of advancing industrial activity.



OITA LSI Cluster Projects

Oita LSI Cluster Promotion Council has instituted a medium-range vision formulated primarily through its Planning Committee in the 2008 fiscal year.

OITA LSI Cluster Medium-Range Vision

Slogan

Importing global information, exporting Oita's innovations!

OITA LSI Cluster Concept

Research and Development Generating new world-leading technologies.

Human Resource Development Cultivating Human Resource of global standard.

Market Cultivation / Information Services

Gathering and providing information on technologies and needs of customers worldwide.

Member Interchange Fostering businesspeople of global standard.

The specialist divisions for Research and Development, Human Resource Development, Market Cultivation / Information Services, and Member Interchange are each pursuing specific initiatives under the following sub-themes (strategies) developed in line with the medium-range vision.

Research and Development	<ol style="list-style-type: none"> 1. Realizing successful case models for business linkage and development of new technologies. 2. Proposing developments in screening and evaluation systems. 3. Organizing mid-term reporting sessions and performance briefings for working groups. 4. Market research and market development assistance in relation to research themes. 5. Research and development for productivity improvements, etc. 6. Periodical information exchange with the academic sector. 	Human Resource Development	<ol style="list-style-type: none"> 1. Cultivating and developing engineers with broad outlooks. 2. Operating projects led by working groups. 3. Augmenting training for technical personnel based on the needs of member enterprises. 4. Bolstering partnerships with universities, etc. 5. Engaging expert instructors from other organizations. 6. Expanding basic education and training for new personnel. 7. Supporting the maintenance of employment opportunities.
Market Cultivation / Information Services	<ol style="list-style-type: none"> 1. Surveys and research on Joint tendering and other business models. 2. Formulating systems for self-diagnosis of commercial position. 3. Increasing knowledge-gathering and provision of information to member enterprises. 4. Supporting business matching. 5. Bolstering information dissemination functions. 	Member Interchange	<ol style="list-style-type: none"> 1. Organizing meetings for interaction among top-level executives from both within and beyond the prefecture. 2. Exchange and network-building with clusters in other regions and beyond Japan. 3. Collaboration with the Kyushu Semiconductor Industries and Technology Innovation Association.